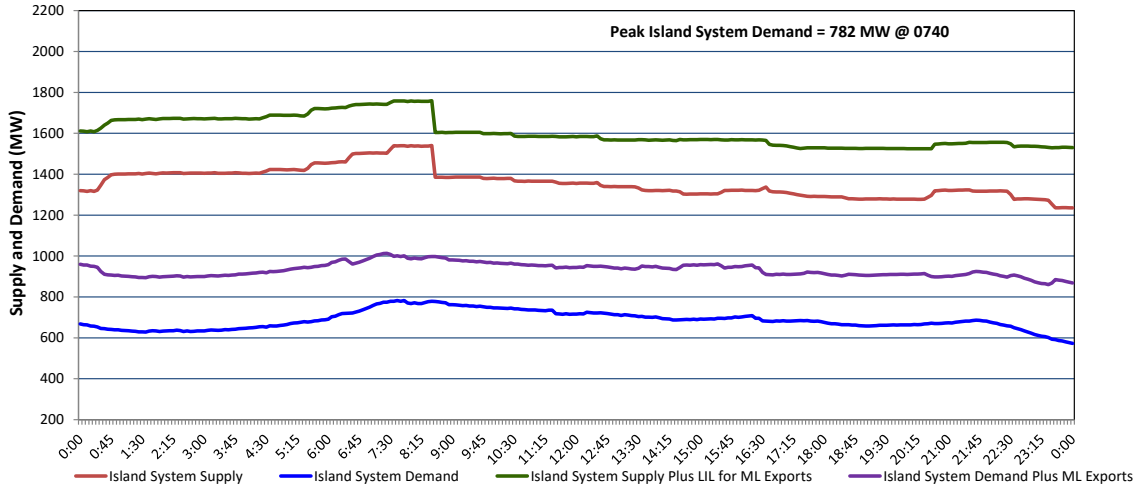


Newfoundland Labrador Hydro (NLH) Supply and Demand Status Report Filed Tuesday, June 16, 2026

Section 1 Island Interconnected System - Supply, Demand & Exports Actual 24 Hour System Performance For Monday, June 15, 2026



Island Supply Notes For June 15, 2026

- A As of 1326 hours, February 05, 2026, Cat Arm Unit 2 available at 57 MW due to forced derating (67 MW).
- B As of 0800 hours, March 29, 2026, Holyrood Unit 3 unavailable due to planned outage (150 MW).
- C As of 1513 hours, April 16, 2026, St. Anthony Diesel Plant available at 7.7 MW due to forced derating (9.7 MW).
- D As of 0800 hours, May 06, 2026, Holyrood Unit 2 unavailable due to planned outage 40 MW (170 MW).
- E As of 0701 hours, May 24, 2026, Holyrood Unit 1 unavailable due to planned outage 166 MW (170 MW).
- F As of 0841 hours, May 24, 2026, Hinds Lake Unit unavailable due to planned outage (75 MW).
- G As of 1700 hours, June 12, 2026, Bay d'Espoir Unit 2 unavailable due to forced extension to planned outage (76.5 MW).
- H **At 0834 hours, June 15, 2026, Bay d'Espoir Unit 3 unavailable due to planned outage (76.5 MW).**
- I **At 0834 hours, June 15, 2026, Bay d'Espoir Unit 4 unavailable due to planned outage (76.5 MW).**

Section 2 Island Interconnected System - Supply, Demand & Outlook

Tue, Jun 16, 2026	Island System Outlook ²	Seven-Day Forecast	Island System Daily Peak Demand (MW)	
			Forecast ⁸	Adjusted ⁵
Island System Supply: ⁴	1,377 MW	Tuesday, June 16, 2026	820	770
NLH Island Generation: ^{3,7}	885 MW	Wednesday, June 17, 2026	930	880
NLH Island Power Purchases: ⁵	90 MW	Thursday, June 18, 2026	910	860
NP and CBPP Owned Generation:	215 MW	Friday, June 19, 2026	885	835
LIL/ML Net Imports to Island: ⁹	187 MW	Saturday, June 20, 2026	870	820
		Sunday, June 21, 2026	825	775
7-Day Island Peak Demand Forecast:	930 MW	Monday, June 22, 2026	860	810

Island Supply Notes For June 16, 2026

- Notes:
1. Generation outages for running and corrective maintenance are included. These are not unusual for power system operations. They generally do not impact customer supply. Hydro schedules outages to system equipment whenever possible to coincide with periods when customer demands are low and sufficient supply reserves are available. However, from time to time equipment outages are necessary and reserves may be impacted.
 2. As of 0800 Hours.
 3. Gross continuous unit output.
 4. Gross output from all Island sources (including Note 3).
 5. NLH Island Power Purchases include: ML Imports, Exploits Generation, Rattle Brook, Star Lake, Wind Generation and capacity assistance (when applicable).
 6. Adjusted for interruptible load and the impact of voltage reduction when applicable.
 7. Due to limitations inherent in the design of combustion turbines, the output of combustion turbines may be reduced in the event that ambient temperatures exceed the threshold required for full rated output. This threshold is dependent on the design of each turbine.
 8. Does not include ML Exports.
 9. LIL Import sunk in the Island System. Actual LIL flows will be restricted by various system conditions including, but not limited to, Island Load, ML Exports and Avalon Unit status.

Section 3 Island Peak Demand and Exports Information Previous Day Actual Peak and Current Day Forecast Peak

Mon, Jun 15, 2026	Island Peak Demand ¹⁰	7:40	782 MW
	Exports at Peak		219 MW
	LIL Net Imports to Island		4,404 MWh
Tue, Jun 16, 2026	Forecast Island Peak Demand		820 MW

- Notes:
10. Island Demand is supplied by NLH generation and purchases, LIL Imports plus generation owned and operated by Newfoundland Power and Corner Brook Pulp & Paper (Deer Lake Power, DLP).